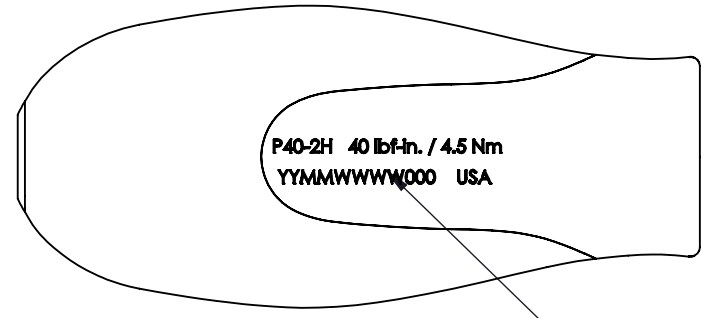
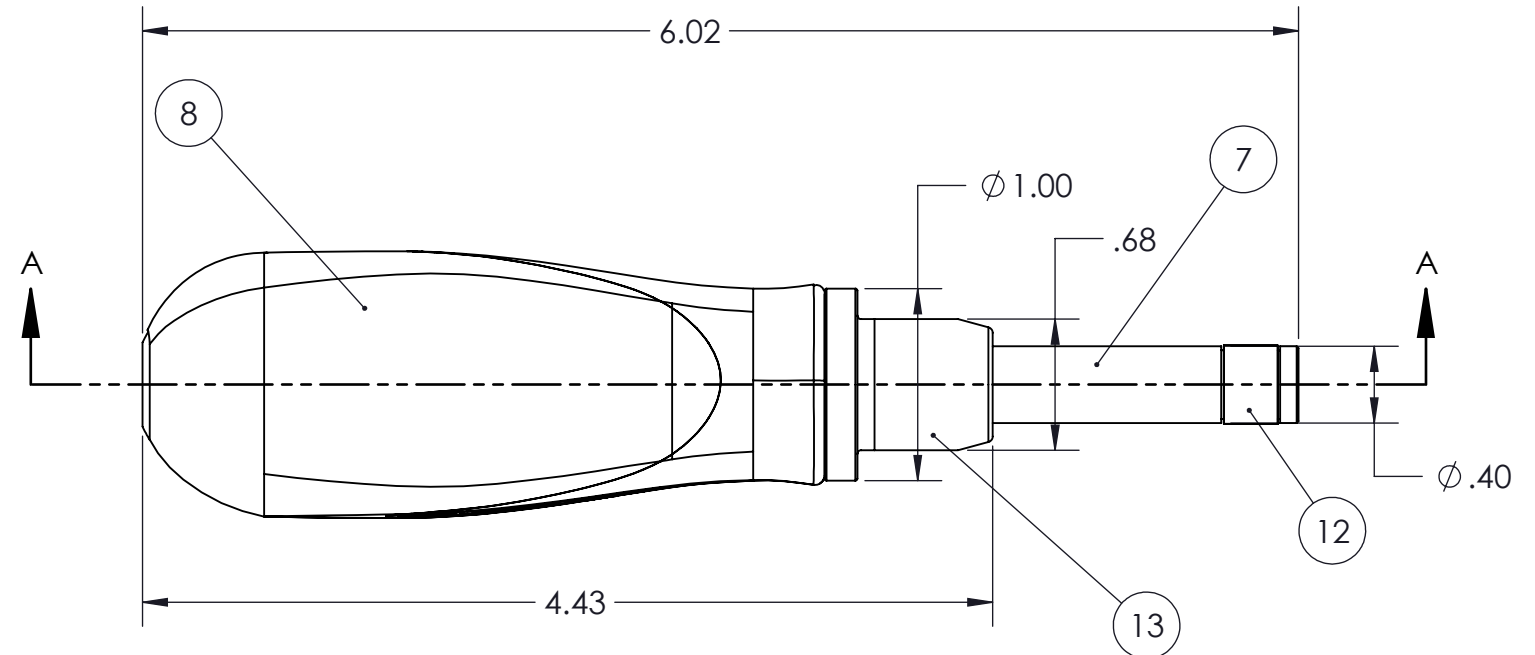
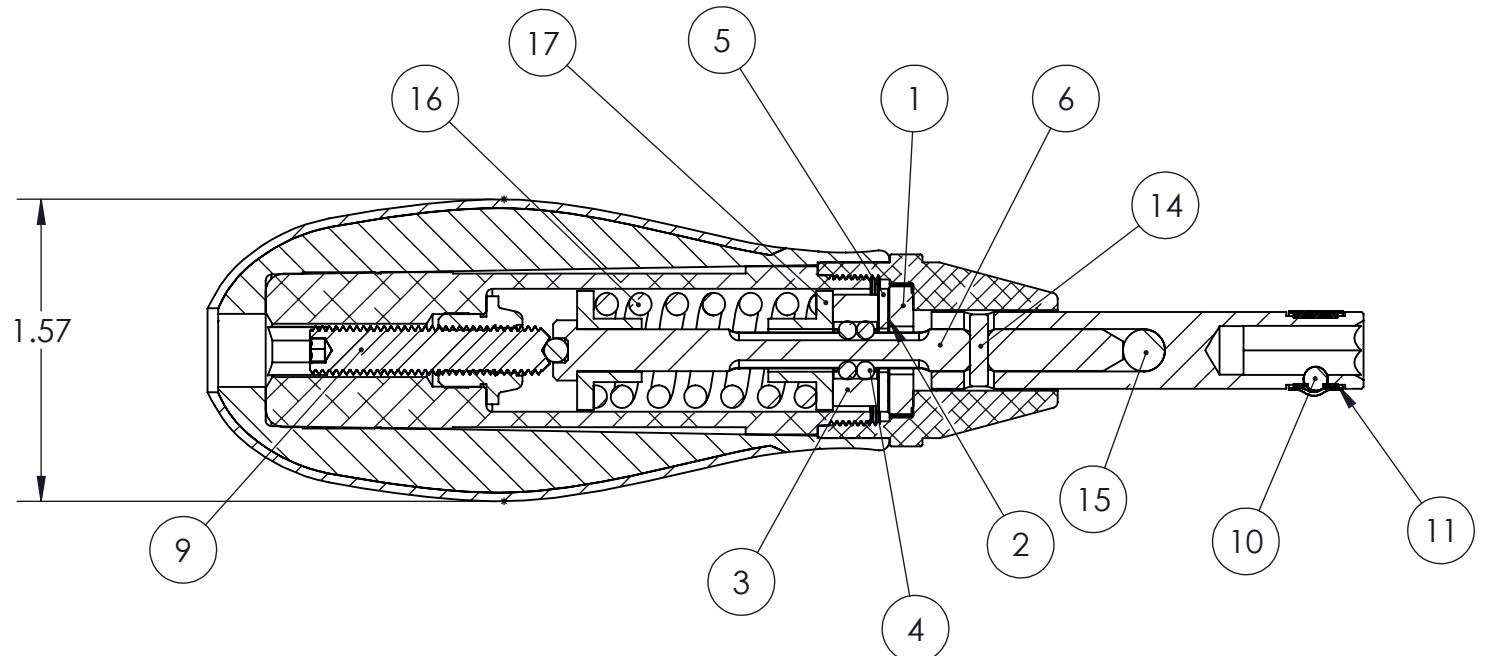


ITEM NO.	PART NUMBER	DESCRIPTION	QTY.
1	814883	DIMPLED INSERT: LOWER CLUTCH (TL-40)	1
2	812155	BALL 7/64	5
3	814885	UPPER CLUTCH (TL-40)	1
4	842980	BALL: 3/32" DIA.	4
5	812645	BALL RETAINER, P SERIES	1
6	812720	TORQUE SCREWDRIVER SHAFT	1
7	812709	1/4" HEX BIT HOLDER	1
8	814464	INDUSTRIAL PRESET CASE ASSY	1
9	812007	SCREW: SET; 1/4-28x1-1/4" HEX. SOC. CUP PT.	2
10	861004	BALL; 1/8 DIA.	3
11	812129	SPRING CLIP	2
12	865297	SLEEVE HEAT SHRINK .375 x 9/32	2
13	812708	NOSE INDUSTRIAL LARGE	1
14	812056	DOWEL PIN	1
15	861006	7/32 BALL	1
16	814815	SPRING; P20/P40	1
17	812624	P SERIES SPRING RETAINER	2

PART NO. **810503**



REF CP-7616




SECTION A-A

**BREAK ALL SHARP EDGES  
DO NOT SCALE DRAWING**

THIS PRINT AND ALL INFORMATION APPEARING THEREON IS THE PROPERTY OF "STURTEVANT/RICHMONT". NEITHER THE PRINT NOR THE INFORMATION THEREON MAY BE REPRODUCED OR USED IN ANY MANNER WHATSOEVER OR DIVULGED TO ANY OTHER PERSON UNLESS SPECIFICALLY AUTHORIZED BY "STURTEVANT/RICHMONT".

MATERIAL	UNLESS OTHERWISE NOTED: DIMENSIONS ARE IN INCHES, DUAL DIMENSIONS - IN MM, TOLERANCES ARE: ANGLES $\pm 1/2^\circ$ TWO PLACE DEC. $\pm 0.10$ THREE PLACE DEC. $\pm 0.005$ FRACTIONS $\pm 1/64$ FEATURES ON $\phi$ $\pm 0.10$ SURFACE FINISH -		
WEIGHT:			
PLATING			
HEAT TREAT			
	DRAWN BY	M. HENTSCHEL	11/8/2021
	CHECKED BY	J. REYNERTSON	-
	RELEASED	J. REYNERTSON	-

 <b>STURTEVANT RICHMONT</b> <sup>®</sup> TORQUE MEASUREMENT SYSTEMS DIVISION OF RYESON CORPORATION		PART DESCRIPTION	
		P40-2H (40 IN.LBS.)	
SCALE: 1:1	<b>B</b>	DWG. NO.	810503
			SHEET No. 1