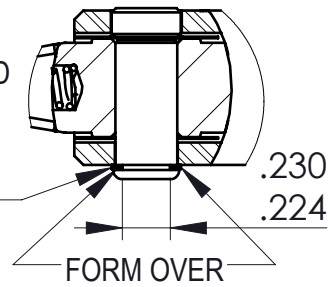


DETAIL A  
 SCALE 1.5 : 1  
 DEFORM BEFORE CALIBRATION

816799 - THIS PIN IS FORMED OVER CUSTOMER MUST GRIND OFF FORMED END & INSTALL THIS PIN FORMING THE HEAD OVER THE RETAINING RING AS SHOWN



857451 - INSTRUCTIONS  
 857048 - CARTON

LEGEND: ( ) = QUANTITY/TOOL  
 \* = QUANTITY/MULTI-PAK



THIS PRINT AND ALL INFORMATION APPEARING THEREON IS THE PROPERTY OF "STURTEVANT RICHMONT". NEITHER THE PRINT NOR THE INFORMATION THEREON MAY BE REPRODUCED OR USED IN ANY MANNER WHATSOEVER OR DIVULGED TO ANY OTHER PERSON UNLESS SPECIFICALLY AUTHORIZED BY "STURTEVANT RICHMONT".

DESCRIPTION  
**CCM 20NM MG**

DIAGRAM No	REV.
869785-B	B