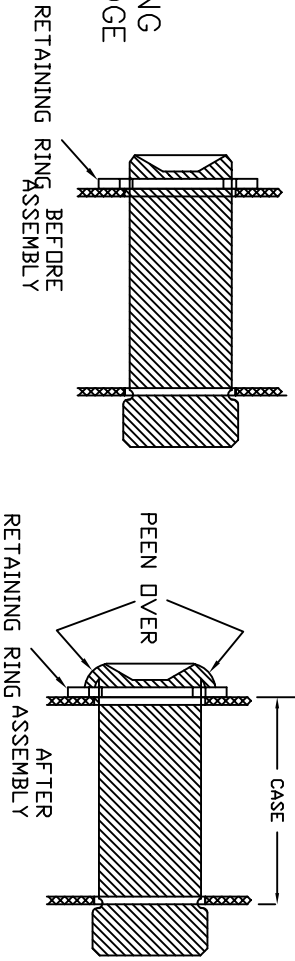


OPTION FOR HEAD BEARING PIN
 816799—THIS PIN USES A RETAINING RING FOR LOCATION ONLY.
 CUSTOMER MUST INSTALL THIS PIN USING A PRESS OR HAMMER, PEENING THE EDGE OVER THE HOLE.
 THIS IS A PERMANENT ASSEMBLY.
 REMOVAL REQUIRES GRINDING THE PIN.



811237—Tang Ass'y. (Includes Tang & Pin & spring adapter)

LEGEND: () = Quantity/Tool

* = Quantity/Multi-Pak



THIS PRINT AND ALL INFORMATION APPEARING THEREON IS THE PROPERTY OF STURTEVANT/RICHMOND. NO PART OF THIS INFORMATION OR THEREIN MAY BE REPRODUCED OR USED IN ANY MANNER WHATSOEVER BY ANY OTHER PERSON UNLESS SPECIFICALLY AUTHORIZED BY STURTEVANT/RICHMOND.

PART DESCRIPTION	DIAGRAM NO. & REV.
LTC 1501 (IN./LBS)	852033-D