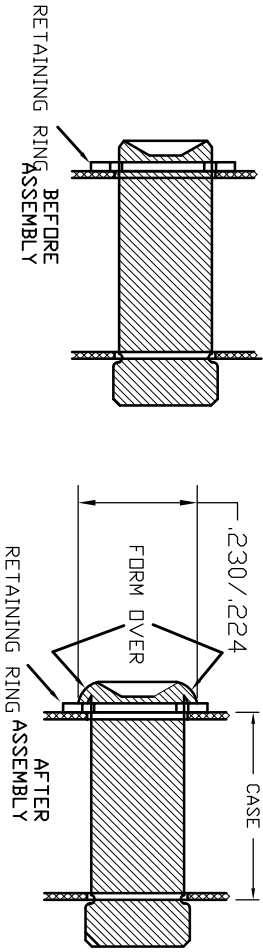


816799—THIS PIN IS FORMED OVER CUSTOMER MUST GRIND OFF FORMED END & INSTALL THIS PIN FORMING THE HEAD OVER THE RETAINING RING AS SHOWN.



INSTRUCTIONS CASE & LABEL
 857046 820123 & 863052

816958—Ratchet Renewal Kit (Includes Spindle, Reversing Pin, Washer, Retaining Ring, Spring, & Ball)
 811367—Ratchet Tang Ass'y. (Includes Ratchet Renewal Kit & Tang)

LEGEND: () = Quantity/Tool
 * = Quantity/Multi-Pak



THIS PRINT AND ALL INFORMATION APPEARING THEREON IS THE PROPERTY OF "STURTEVANT/RICHMONT". NEITHER THE PRINT NOR THE INFORMATION THEREON MAY BE REPRODUCED OR USED IN ANY MANNER WHATSOEVER OR DIVULGED TO ANY OTHER PERSON UNLESS SPECIFICALLY AUTHORIZED BY "STURTEVANT/RICHMONT".

PART DESCRIPTION DIAGRAM NO. & REV.
 3SDR 100Nm 3/8" 810777—J