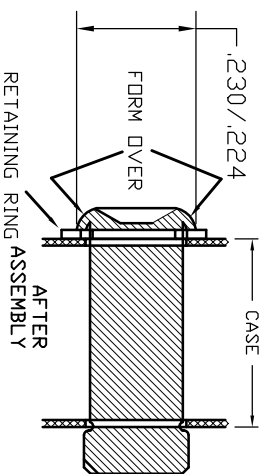
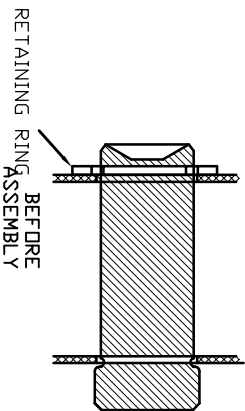


816799—THIS PIN IS FORMED OVER CUSTOMER MUST GRIND OFF FORMED END & INSTALL THIS PIN FORMING THE HEAD OVER THE RETAINING RING AS SHOWN.



857046—INSTRUCTIONS

811168—Tang Assy. (Includes Tang, Pin & spring adapter, & Adj. screw)

LEGEND: ( ) = Quantity/Tool

\* = Quantity/Multi-Pak



**STURTEVANT RICHMOND**  
 TRADE MEASUREMENT SYSTEMS  
 DIVISION OF RESON CORPORATION

THIS PRINT AND ALL INFORMATION APPEARING THEREON IS THE PROPERTY OF STURTEVANT/RICHMOND. NEITHER THE PRINT NOR THE INFORMATION THEREON MAY BE REPRODUCED OR USED IN ANY MANNER WHATSOEVER BY ANY OTHER PERSON UNLESS SPECIFICALLY AUTHORIZED BY STURTEVANT/RICHMOND.

**PART DESCRIPTION**  
 CCM 501 (IN./LBS)

**DIAGRAM NO. & REV.**  
 810769—G