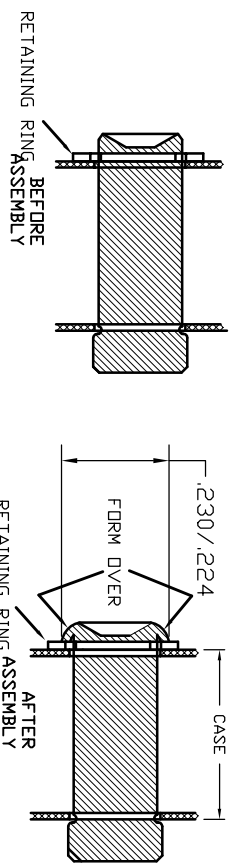


816799—THIS PIN IS FORMED OVER CUSTOMER MUST GRIND OFF FORMED END & INSTALL THIS PIN FORMING THE HEAD OVER THE RETAINING RING AS SHOWN.



INSTRUCTIONS: 857046  
 CASE & LABEL: 820122 & 863052

816958—Ratchet Renewal Kit (Includes Spindle, Reversing Pin, Washer, Retaining Ring, Spring, & Ball)  
 811366—Ratchet Tang Ass'y. (Includes Ratchet Renewal Kit & Tang)

LEGEND: ( ) = Quantity/Tool  
 \* = Quantity/Multi-Pak



THIS PRINT AND ALL INFORMATION APPEARING THEREON IS THE PROPERTY OF STURTEVANT/RICHMOND. NEITHER THE PRINT NOR THE INFORMATION HEREON MAY BE REPRODUCED OR USED IN ANY MANNER WHATSOEVER OR DIVULGED TO ANY OTHER PERSON UNLESS SPECIFICALLY AUTHORIZED BY STURTEVANT/RICHMOND.

PART DESCRIPTION	DIAGRAM NO. & REV.
3SDR 2001 (IN./LBS)	810761—G