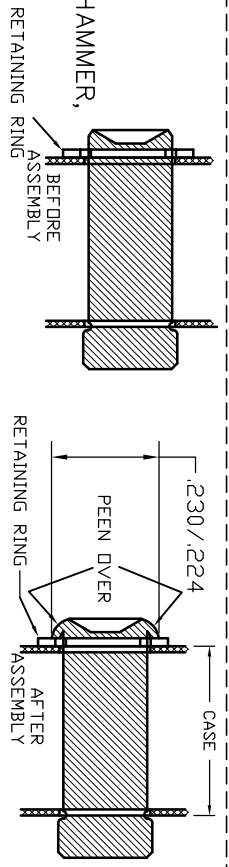


816799—THIS PIN IS FORMED OVER CUSTOMER MUST GRIND OFF FORMED END & INSTALL THIS PIN USING A PRESS OR HAMMER, PEENING THE EDGE OVER THE HOLE.

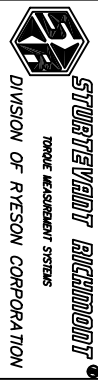


INSTRUCTIONS: 857046
 CASE & LABEL: 820122 & 863052

816998—Ratchet Renewal Kit (Includes Spindle, Reversing Pin, Washer, Retaining Ring, Spring, & Ball)
 811349—Ratchet Tang Ass'y. (Includes Ratchet Renewal Kit & Tang)

LEGEND: () = Quantity/Tool

* = Quantity/Multi-Pak



THIS PRINT AND ALL INFORMATION APPEARING THEREON IS THE PROPERTY OF STURTEVANT/RICHMOND. NEITHER THE PRINT NOR THE INFORMATION THEREON MAY BE REPRODUCED OR USED IN ANY MANNER WHATSOEVER OR DIVULGED TO ANY OTHER PERSON UNLESS SPECIFICALLY AUTHORIZED BY STURTEVANT/RICHMOND.

PART DESCRIPTION	DIAGRAM NO. & REV.
2SDR 501 (IN./LBS)	810749-G