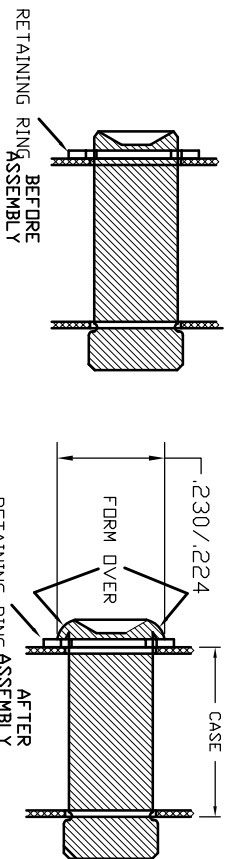


816799—THIS PIN IS FORMED OVER CUSTOMER MUST GRIND OFF FORMED END & INSTALL THIS PIN FORMING THE HEAD OVER THE RETAINING RING AS SHOWN.



857045—Instructions  
 811237—Tang Ass'y. (Includes Tang & Pin & spring adapter)

LEGEND: ( ) = Quantity/Tool  
 \* = Quantity/Multi-Pak



**STURTEVANT CORPORATION**  
 TORQUE MEASUREMENT SYSTEMS  
 DIVISION OF RYERSON CORPORATION

THIS PRINT AND ALL INFORMATION APPEARING THEREON IS THE PROPERTY OF STURTEVANT/RICHMONT. NEITHER THE PRINT NOR THE INFORMATION THEREON MAY BE REPRODUCED OR USED IN ANY MANNER WHATSOEVER OR DIVULGED TO ANY OTHER PERSON UNLESS SPECIFICALLY AUTHORIZED BY STURTEVANT/RICHMONT.

PART DESCRIPTION

LTC 501 (IN./LBS)

DIAGRAM NO. & REV.

810100-K