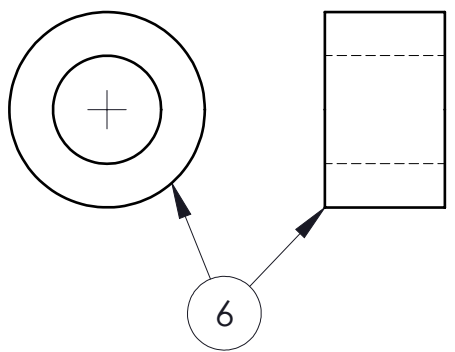
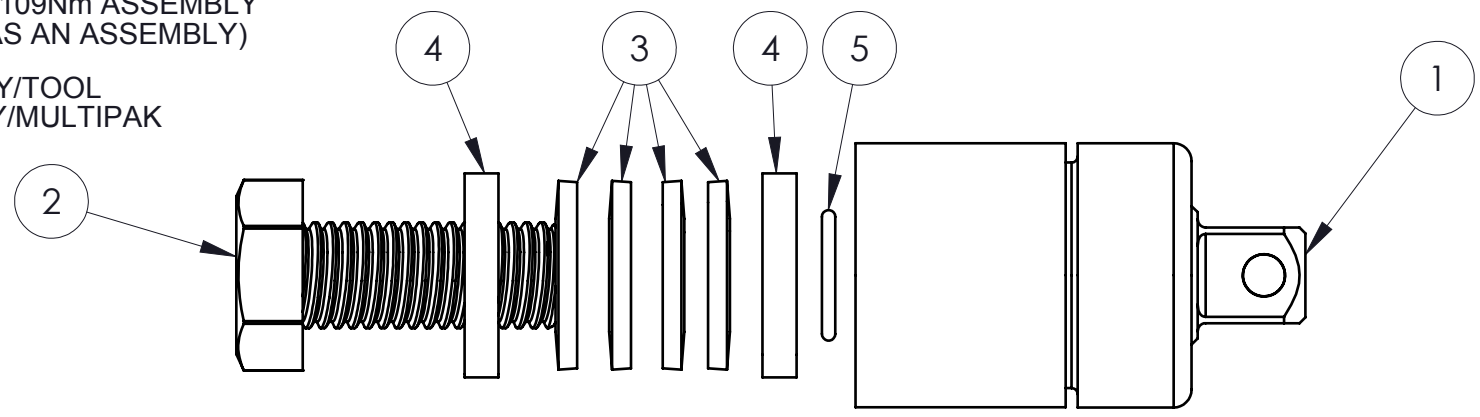


ITEM NO.	PART NUMBER	DESCRIPTION	QTY.
1	811396	WELDMMENT RUNDOWN 109 Nm FIXTURE w/ 1/2"[12.7] MALE SQ DRIVE	1
2	890854	SCREW, M14 x 2 x 35mm, 10.9 HEX HEAD CAP	(1)-9*
3	891030	BELLEVILLE WASHER, M14	(4)-12*
4	891031	METRIC THICK WASHER, M14	(2)-6*
5	891098	O-RING, 9/16 OD x 7/16 ID x 1/16 THK	(1)-10*
6	891032	BUSHING, 9/16"[14.29] ID x 1.020"[25.91] OD x 5/8"[15.88]	(1)-3*

NOTE:
ALL ENGAGING SURFACES MUST HAVE
LUBRICANT APPLIED TO THEM (MOLY GREASE,
PN: 816034)

RUNDOWN FIXTURE 109Nm ASSEMBLY
(811396 IF BOUGHT AS AN ASSEMBLY)

LEGEND ()=QUANTITY/TOOL
*=QUANTITY/MULTIPAK



BUY KIT 816043				DESCRIPTION
8	1	1	891058	BAG, 6 x 10, POLY ZIP, 4 MIL
7	1	1	857037	CARTON
6	1	3	891032	BUSHING, 9/16"[14.29] ID x 1.020"[25.91] OD x 5/8"[15.88]
5	1	10	891098	O-RING, 9/16 OD x 7/16 ID x 1/16 THK
4	2	6	891031	METRIC THICK WASHER, M14
3	4	12	891030	BELLEVILLE WASHER, M14
2	1	9	890854	SCREW, M14 x 2 x 35mm, 10.9 HEX HEAD CAP
1	1		811396	WELDMMENT RUNDOWN 109 Nm FIXTURE w/ 1/2"[12.7] MALE SQ DRIVE
ITEM	QTY REQ'D	MULTI PAK QTY	PART NO.	DESCRIPTION