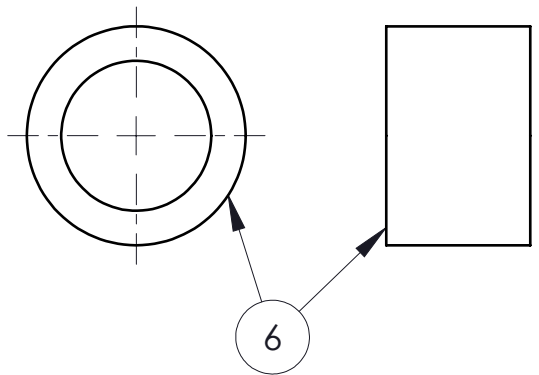
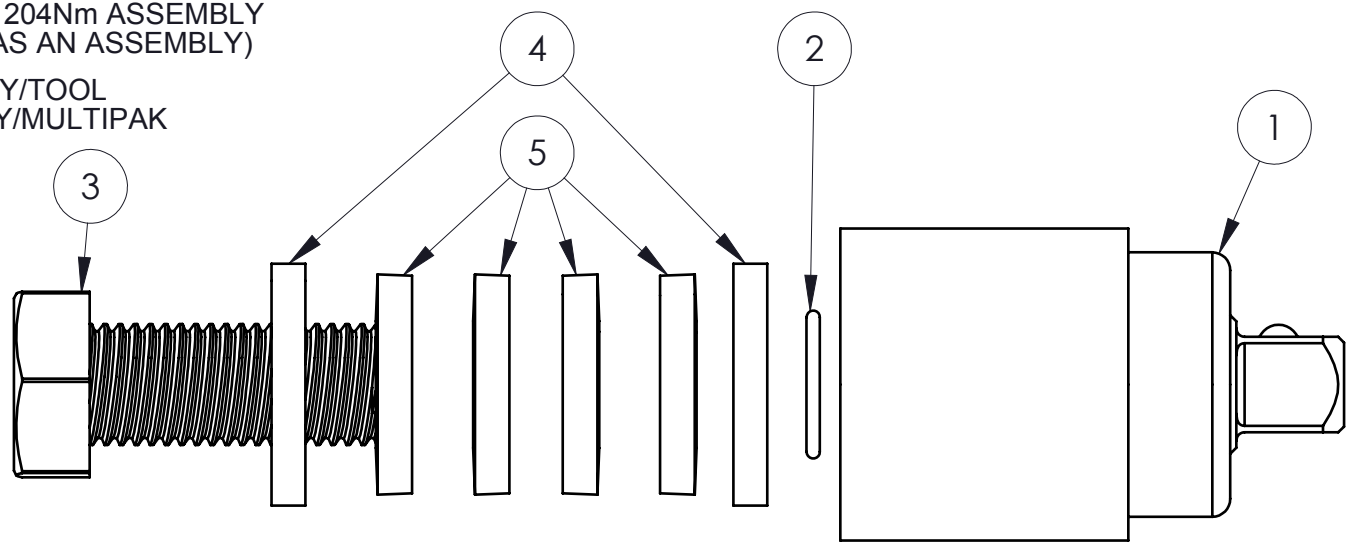


ITEM NO.	PART NUMBER	DESCRIPTION	QTY.
1	811397	WELDMMENT RUNDOWN 204 Nm FIXTURE w/ 1/2" MALE SQ DRIVE	1
2	891096	O-RING, 11/16 OD x 1/2 ID x 3/32 THK, 204Nm RUNDOWN FIXTURE	(1)-10*
3	890863	SCREW, M16 x 2 x 40mm, 12.9 HEX HEAD CAP	(1)-9*
4	891050	METRIC THICK WASHER, M16	(2)-6*
5	30415	WASHER, BELLEVILLE 5/8	(4)-12*
6	891051	BUSHING, 25/32 ID , 1.145 OD, 3/7 LONG	(1)-3*

NOTE:
ALL ENGAGING SURFACES MUST HAVE
LUBRICANT APPLIED TO THEM (MOLY GREASE,
PN: 816034)

RUNDOWN FIXTURE 204Nm ASSEMBLY
(811397 IF BOUGHT AS AN ASSEMBLY)

LEGEND ()=QUANTITY/TOOL
*=QUANTITY/MULTIPAK



BUY KIT 816044

8	1	1	891058	BAG
7	1	1	857037	CARTON
6	1	3	891051	BUSHING, 25/32 ID , 1.145 OD, 3/7 LONG
5	4	12	30415	WASHER, BELLEVILLE 5/8
4	2	6	891050	METRIC THICK WASHER, M16
3	1	9	890863	SCREW, M16 x 2 x 40mm, 12.9 HEX HEAD CAP
2	1	10	891096	O-RING, 11/16 OD x 1/2 ID x 3/32 THK
1	1		811397	WELDMMENT RUNDOWN 204 Nm FIXTURE w/ 1/2" MALE SQ DRIVE
ITEM	QTY REQ'D	MULTI PAK QTY	PART NO.	DESCRIPTION